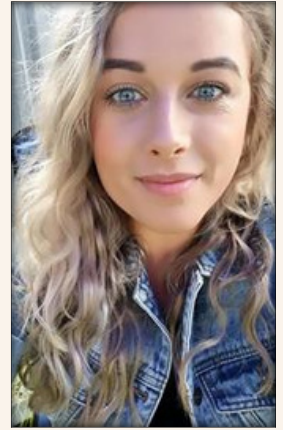


bupup balak wayipungang program

(Supporting the young kids program)

Hi there! My name is Sarah, and I am currently working as a wayipungitj (supporter) for the bupup balak wayipungang program across the Hume and Merri-bek local government areas.



What is a wayipungitj and what do they do?

wayipungitj roles are an initiative funded by the Department of Education and Training (DET). wayipungitj work out of local community-based organisations.

They work with services delivering kindergarten programs to:

- Enhance the access and participation of Koorie children in kindergarten programs.
- Promote and assist in the delivery of kindergarten programs that are inclusive of Koorie children.
- Support the attendance of Koorie children who are enrolled in kindergarten programs.
- Encourage the involvement and participation of Koorie parents, families, and carers in the development of kindergarten programs.

What does my work with families look like?

Firstly, I focus on understanding each individual family and their needs while working to build rapport and a trusting relationship. From here, I work to support the family in overcoming any barriers to engaging in early childhood education and support families through the enrolment and transition into early childhood education, kindergarten, or school to ensure their children receive an education best suited to them. I act as a starting point with families and can refer them on to services that can support their needs.

What does my work with children and early learning services look like?

I help services to create a culturally safe and inclusive environment. I also support the implementation of First Nations perspectives and instruct on where to find relevant information to help embed this content in classrooms. I also work to build educators confidence to explore this topic with young children in an age appropriate way.

What does my work with First Nations community look like?

I attend local community events including Boorais playgroup and local celebrations. I have developed working partnerships with the Hume Aboriginal Engagement Team and I engage in conversations with First Nations community and Elders to ensure the program aligns with their views, opinions and experiences.

How can you get support from a wayipungitj?

If you are in the Hume or Merri-bek local government areas, I am your go to contact! Feel free to email, text or call me to discuss how I can support you, your service or a family in your area. Contact details are below. For areas outside of Hume/Merri-bek, contact your local council or your regional Department of Education office.

Sarah Rawley

**wayipungitj | Hume & Merri-bek Areas
Gowrie Victoria Broadmeadows Valley |
E: sarahr@gowrievictoria.org.au | M: 0481 966 251**

